

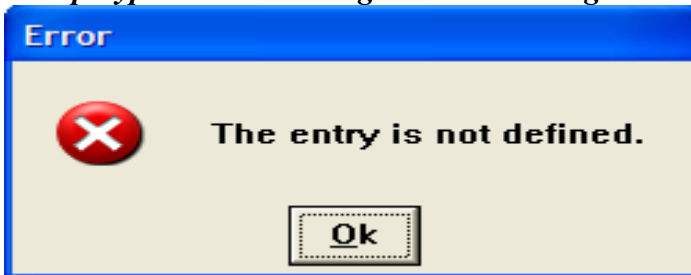


## Alternate Lookup Method Using Attributes

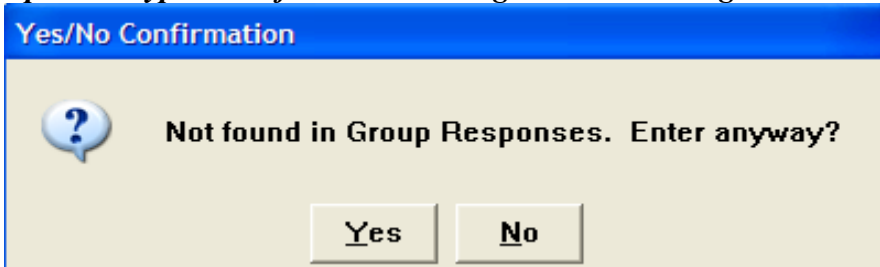
By Marvin Johnson [www.capitassolutions.com](http://www.capitassolutions.com)

It is often helpful to present users with a predefined list of choices (a.k.a. lookups) while they document queries on a Customer Defined Screen (CDS). The standard method for doing this is to build a query as a **Group** or **Optional** type and assign a Group Response to this query. **Group** type queries force the user to answer the query with an element from the Group Response. **Optional** type queries allow responses not in the Group Response, but first the user is presented with an ANNOYING confirmation dialog.

### *Group Type – Error Message When Entering Value Not In Group Response*



### *Optional Type – Confirmation Message When Entering Value Not In Group Response*



I am currently in the middle of building the Nursing (NUR) application for one of my clients. I found myself using a lot of **Optional** type queries. The problem with using **Optional** type queries is the ANNOYING confirmation dialog. There are situations where asking for confirmation is appropriate, but sometimes it is not needed. Did I mention that the confirmation dialog is ANNOYING?

The steps below will show you how to create lookups that allow for any response, but without a confirmation message.

### Step 1 – Create an NPR Report

Create an NPR report called “MIS.zcus.capitas”. This is not really a “report”; its only purpose is to provide a place for us to enter some MAGIC code in a macro. All you need to do is give the report a Title and <F12> File.

### Step 2 – Create a Macro

Create a macro called “alt.lookup” with following code:

```
IF{@Z.lastkey=@Z.lookup&(B) @MIS.GROUP.RESP.name[B]^T,  
%Z.id.non.dict.color(^GGL[B]E,A,"Mnemonic":12L_("Text":26L),"CD:12L_[A,CD]0","BR",T)^X,  
X^/S.A,  
13^/Z};
```

### Step 3 – Add Attribute

Add the following attribute to a Comment type query:

```
REI=IF{"QUERY.MNEMONIC"=/S.LAST.QUERY 1,  
REI=%MIS.zcus.capitas.M.alt.lookup(@.response,"GROUP.RESP")}
```

You will need to edit the parts in **RED** with your actual Query Mnemonic and Group Response. You may find it strange that I am using an REI attribute. You have always been taught that REI makes a query “immediately required”. While it is true that all attribute types have a “core function”, this does not mean that they can not be used in other ways. In fact, this query will not be required unless you append a value to the end such as a “1”.

Example of making the query required immediately:

```
REI=IF{"QUERY.MNEMONIC"=/S.LAST.QUERY 1,  
REI=%Z.zcus.cap.M.alt.lookup(@.response,"GROUP.RESP"),1}
```